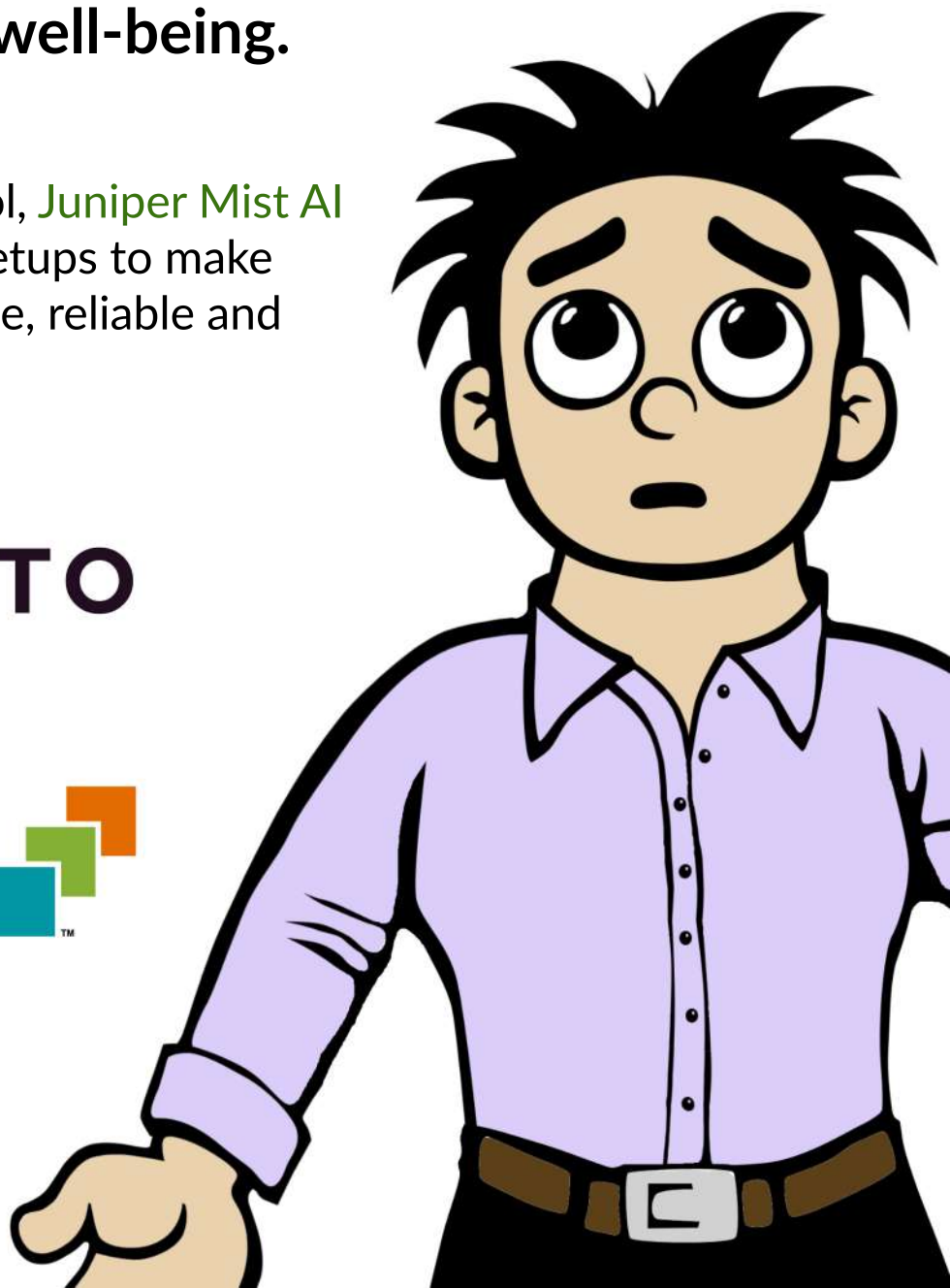


Ai-OPERATION

The Ampito and Juniper Networks AI Operation room is a destination not only for diagnosing network concerns, but for orchestrating a complete transformation in your network's well-being.

Our revolutionary tool, **Juniper Mist AI** can tweak network setups to make them more predictable, reliable and measurable.



Is WiFi capacity planning causing you headaches?

Don't let the pain of unreliable connections weigh you down. You need an AIOps powered solutions that tell you exactly where the root cause of the issue lies, so you can tackle them 'head-on'.

Juniper Mist WiFi Assurance will work wonders for your headache! This feature alleviates the dizzying challenges associated with wireless network performance and connectivity, providing you with clear, actionable insights for optimising end user experience.



Are you suffering from lack of visibility of your users, applications, IoT devices and locations?

Failing to focus on these insights results in a poor perception of your user's network experience, limiting your ability to make worthwhile improvements.

We've got just the corrective lenses for you... **Juniper Mist User Engagement** will provide clarity on suitable troubleshooting thanks to improved data visibility from multiple sources including wireless access points, ethernet switches, routers and firewalls. As a result, expect to reduce staff time for OpEx savings of up to 85%.



Have you got a pain in the neck-work you've been ignoring for far too long?

Perhaps you're suffering from unreliable wired networks that cause disruption for your users due to latency, jitters and packet loss. Don't put up with these irritations any longer!

Get some much-needed relief from **Juniper Mist Wired Assurance**. This feature sets a network management standard with AI-driven operations and automation – inviting you to take a proactive approach to downtime, performance, maintenance, and troubleshooting. Your neck-work will finally be free of those troublesome kinks!



Is your lack of insight on applications over the WAN giving you heart palpitations?

An inefficient flow of insights into traffic and network consumption likely means you can't identify potential blockages before they have a negative impact on your end users.

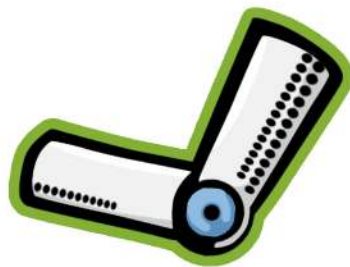
Breathe a new lease of life into your operational decision making with **Juniper Mist WAN Assurance**. This tool has the ability to pump real-time analysis directly into your IT team, increasing network efficiency, reducing downtime and enhancing overall user experience.



Are you having to use lots of elbow grease to grapple accurate network reporting?

Getting to grips understanding historical data trends for capacity planning and stakeholder reporting can take its toll when you aren't able to accurately identify patterns, trends or potential areas for improvement.

Ensure your reporting is running like a well-oiled machine with [Juniper Mist Premium Analytics](#). The slick dashboards provide end-to-end network observability and business intelligence, so you can improve user experience and spot problems before they cause repetitive strains.



Is your stomach in knots over fears of a security breach?

With so many users working-from-home and new pop-up network sites in use, enforcing and controlling which devices can access your network is bound to make you feel queasy.

[Juniper Mist Access Assurance](#) is there to settle your stomach. Our security supplement is designed to deliver robust defences including Zero Trust, identity-based network access control and full-stack policy and segmentation assignments, all thanks to its probiotic ingredients and pro-active monitoring.



Do you have everything in hand when it comes to onboarding new client IoT device credentials at scale?

It's a labour-intensive process which is bound to be causing a few cramps and strains amongst your IT team. Managing the lifecycle of these IoT devices is highly complex and raises a number of security concerns.

You'll be giving your team members a high five when you discover [Juniper Mist IoT Assurance](#). Being able to secure connections for headless IoT and BYOD devices using a Multiple Pre-Shared Key (MPSK) mechanism will give you a break from onboarding devices manually using MAC addresses.



Have you found your Achilles heel while struggling to identify user network devices and assets?

Failing to maintain an accurate inventory of network devices and assets can make you vulnerable and cause 'weak spots' – making you a sole target for security breaches.

Provide yourself with top-to-toe stability with [Juniper Mist Asset Visibility](#). This AI tool uses algorithms to provide real time tracking and visibility into all mobile and IoT devices, so you can comfortably identify unauthorised or suspicious activity – without the fear of being tripped up.



Ai-OPERATION

A better network experience for all

Juniper strive to deliver a simplified and pain-free experience for those who run networks and those who depend on them.

Ampito is a Juniper Elite Plus Partner and a specialist in Mist AI – A cloud-first platform that uses a combination of artificial intelligence, machine learning, and data science techniques to optimise user experiences and simplify operations across the wireless access, wired access, and SD-WAN domains.

Talk to us about how you can improve your network health. Get in touch today.
<https://ampito.com/contact-us/>

